



GMT MONTHLY MEMBERSHIP PROGRESS REPORT

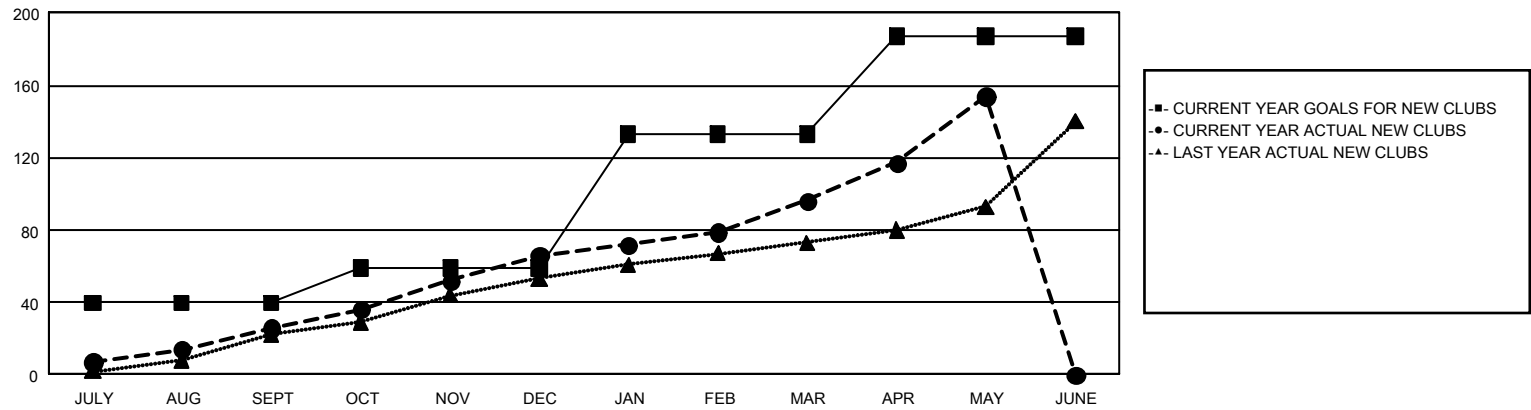
GAT Constitutional Area 3

Results as of: 5/31/2025

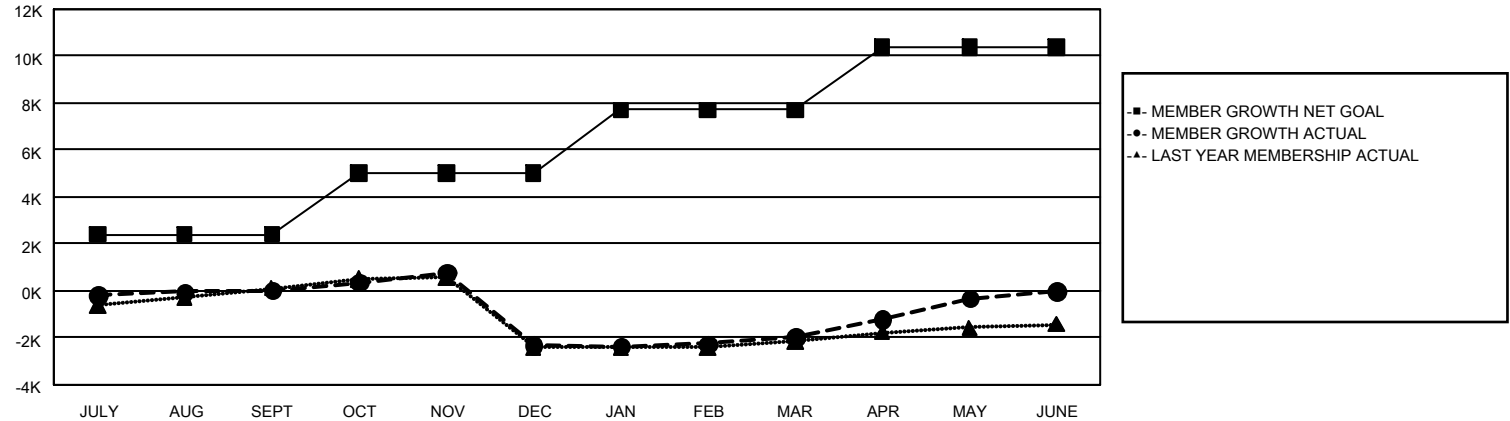
REPORT DOES NOT INCLUDE CLUBS IN UNDISTRICTED AREAS.

| Clubs | | | | Members | | | |
|-----------------------|---------------|-----------|---------------|-----------------------|------------------------|----------------------|--|
| RESULTS FOR 2024-2025 | | | | RESULTS FOR 2024-2025 | | | |
| QUARTER | NEW CLUB GOAL | NEW CLUBS | DROPPED CLUBS | QUARTER | MEMBER GROWTH NET GOAL | MEMBER GROWTH ACTUAL | DROPPED MEMBERS ACTUAL (including transfers) |
| JULY/AUG/SEPT | 40 | 26 | 39 | JULY/AUG/SEPT | 2,394 | 3,314 | 2,771 |
| OCT/NOV/DEC | 19 | 40 | 69 | OCT/NOV/DEC | 2,611 | 4,411 | 6,182 |
| JAN/FEB/MAR | 74 | 30 | 24 | JAN/FEB/MAR | 2,708 | 3,471 | 2,436 |
| APR/MAY/JUNE | 54 | 58 | 4 | APR/MAY/JUNE | 2,654 | 4,134 | 2,120 |

GOALS AND ACTUAL NEW CLUBS CUMULATIVE



GOALS AND ACTUAL MEMBERS CUMULATIVE



| | | | | |
|------------------------|--------|---|--|-----------------|
| DROPPED CLUBS: 135 | | 2,396 CLUBS OF 4,383 ADDED 1 OR MORE NEW MEMBERS | <u>GENDER DISTRIBUTION</u> | |
| | | | MALE | 47,988 (46.24%) |
| | | | FEMALE | 55,732 (53.71%) |
| <u>DROPPED MEMBERS</u> | | CLICK HERE FOR CUMULATIVE MEMBERSHIP DATA | | |
| DECEASED | 687 | | TOTAL FAMILY UNIT MEMBERS 37,071 | |
| CLUB CANCELLED | 1,976 | | | |
| OTHER | 10,746 | | FAMILY MEMBERS PAYING HALF DUES 20,514 | |
| TOTAL | 13,409 | | | |